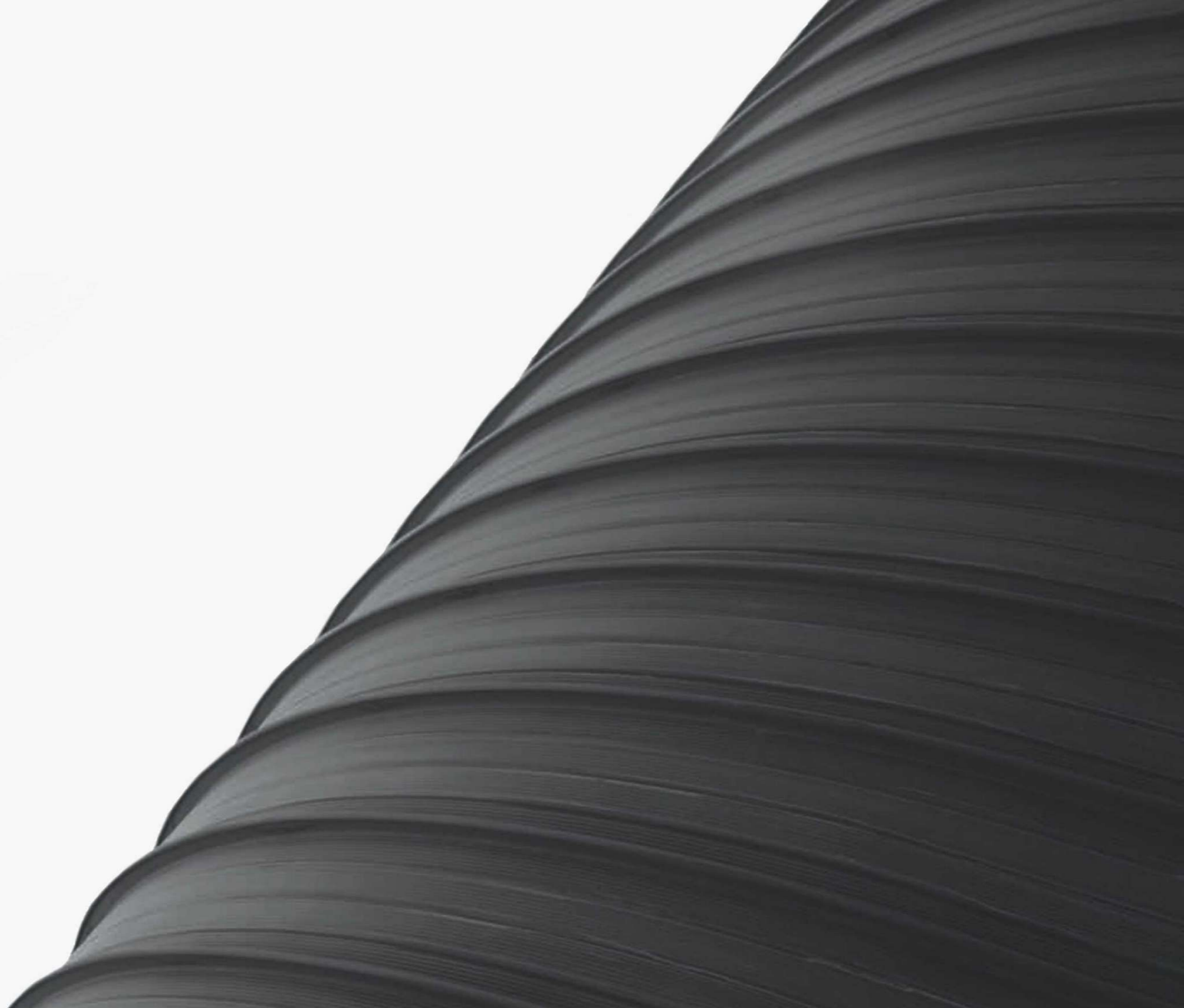


20

07-

21

C
O
L
L
E
C
T
I
O
N





Design has transformed the world,
created culture and values and
continues to do so.

*SMALL-
FORMAT
CONTEMPORARY
GRAPHICS*

Cultura e Ispirazione
Culture and Inspiration

”

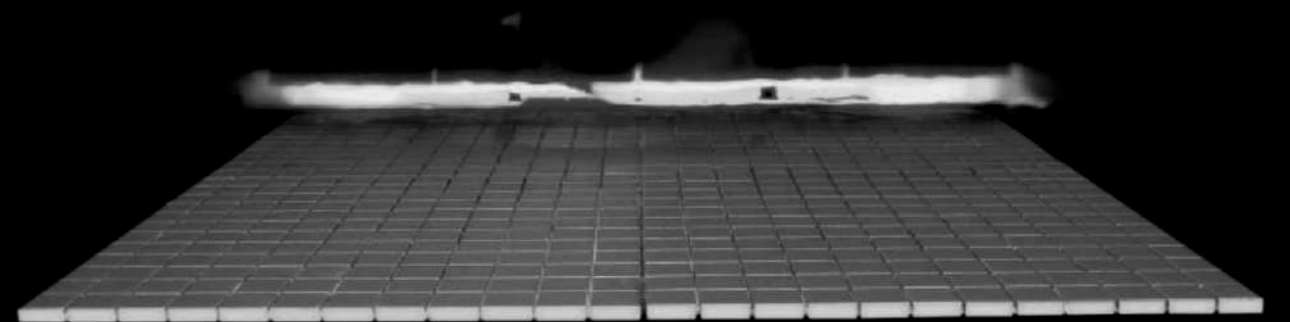
We gives you the feximity to select, mix and merge - items, techniques, sizes, looks and colours. Such combinations create infnite and unique design possibilities to suit your taste and ambience.





Porcelain mosaic is manufactured with state-of-the-art current generation Italian plants and machineries.

Porcelain mosaic is manufactured as per the European Norms as defined in EN 14411, Group B1a i.e. Test Standards applicable to vitrified dry pressed mosaic, O single fired at a temperature of 1200+ C where water absorption (E) is $\leq 0.5\%$.



A series of small-size collections with a hand-crafted aesthetic, a tribute to the history of ceramic and decoration, reinterpreted with a contemporary twist and produced with the most efficient and modern production technologies. A true system of structured, complete furnishing solutions available to private individuals and designers.

A collection of collections in small format with aesthetics as traditional, a tribute to history of ceramics and decoration, reinterpreted in key contemporary and made with more efficient and modern technologies productive. A true system of solutions for the furnishings, articulated and complete available to individuals, designers and designers.





EYE
Chip Size : 48 X 86 MM
Sheet Size : 293 X 316 MM

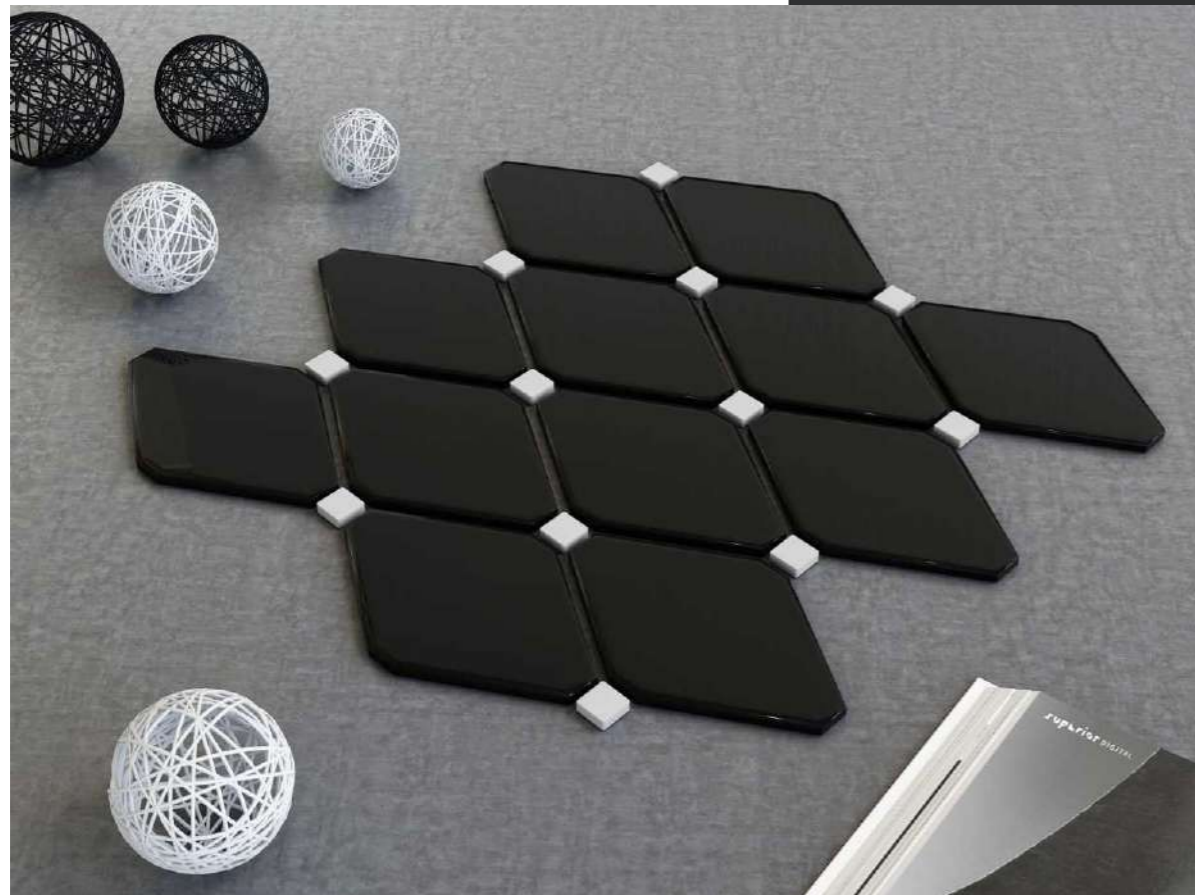
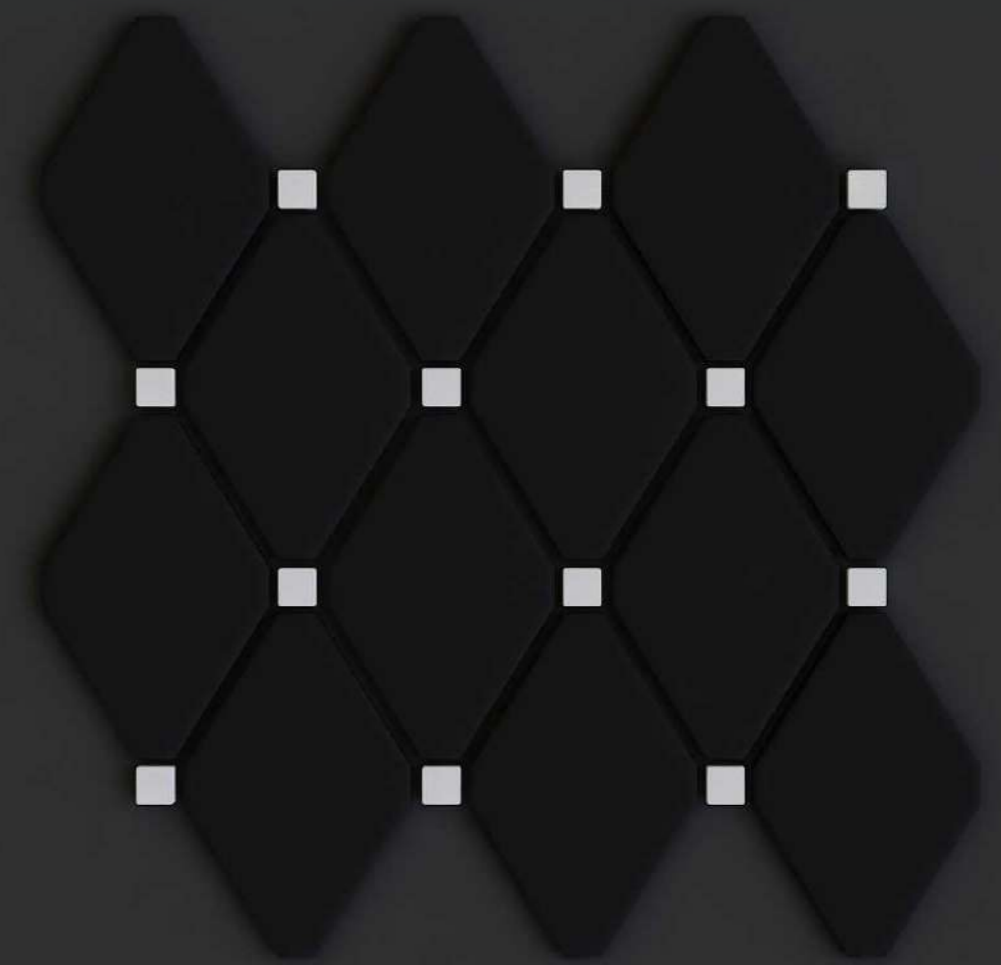




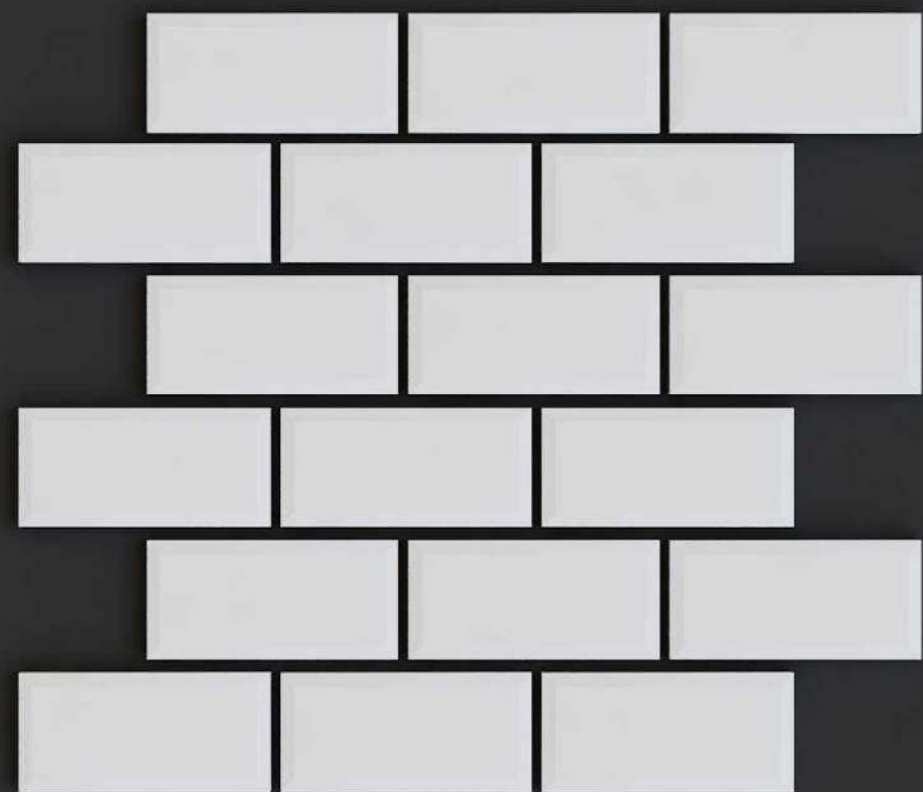
OCTAGON

Chip Size : 15 X 15 / 89.5 X 137.25 MM

Sheet Size : 363.22 X 373.13 MM







RECTANGLE OFFSET

Chip Size : 45 X 95 MM

Sheet Size : 285 X 340 MM

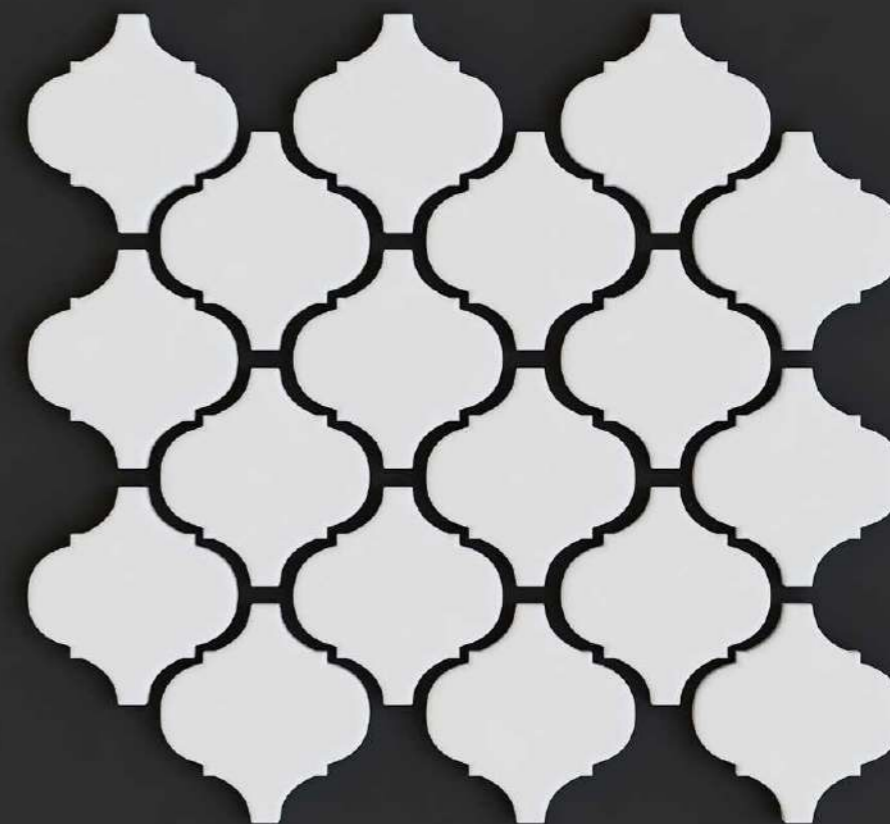


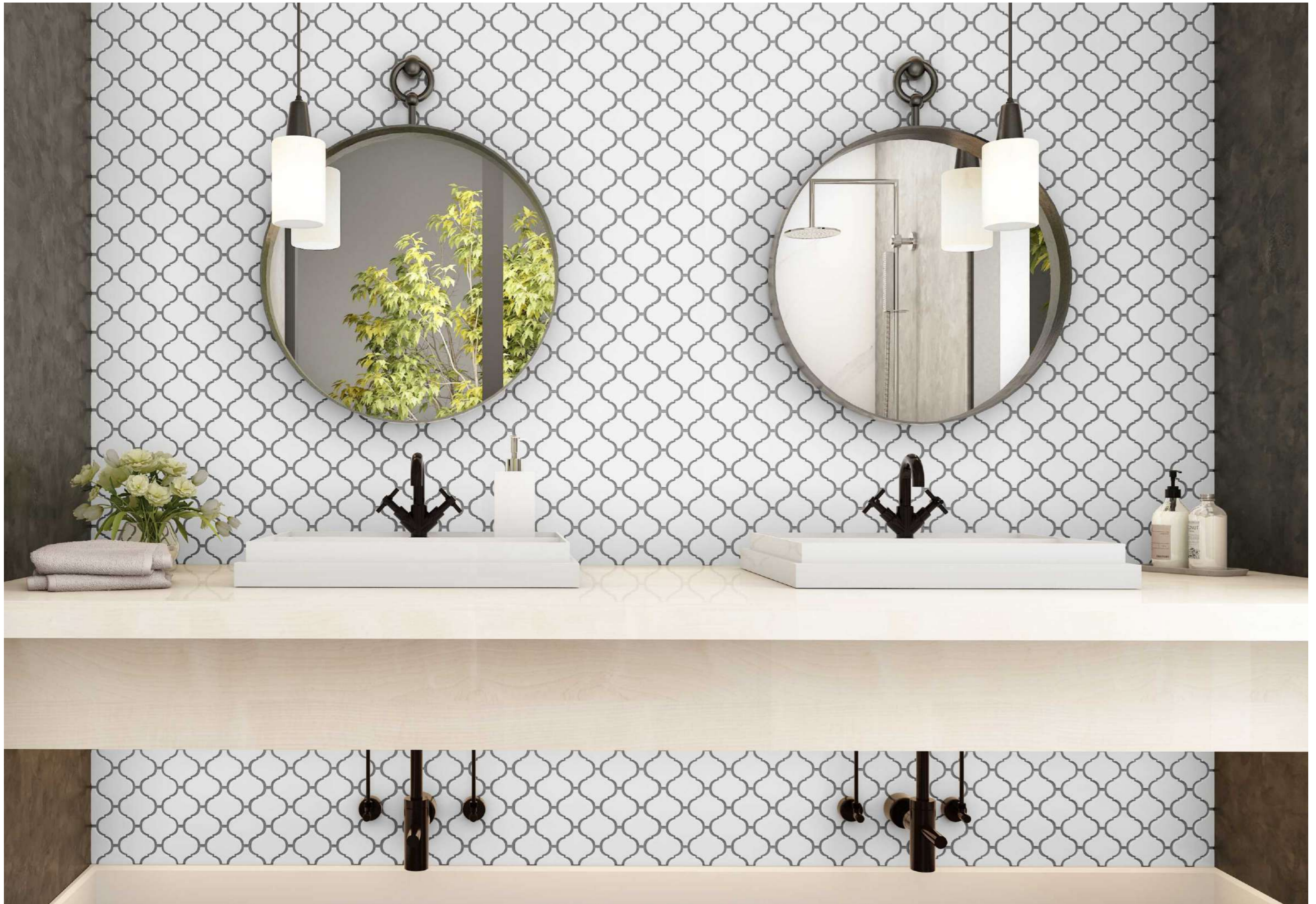


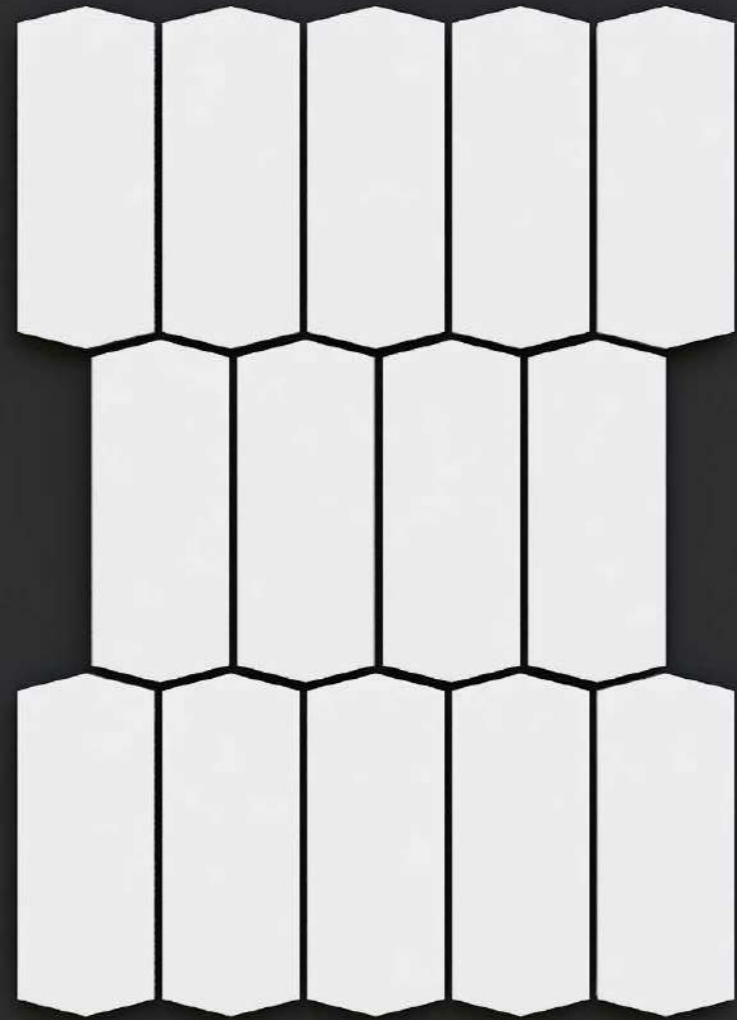
ARABESQUE LANTERN

Chip Size : 74 X 78 MM

Sheet Size : 283 X 307 MM

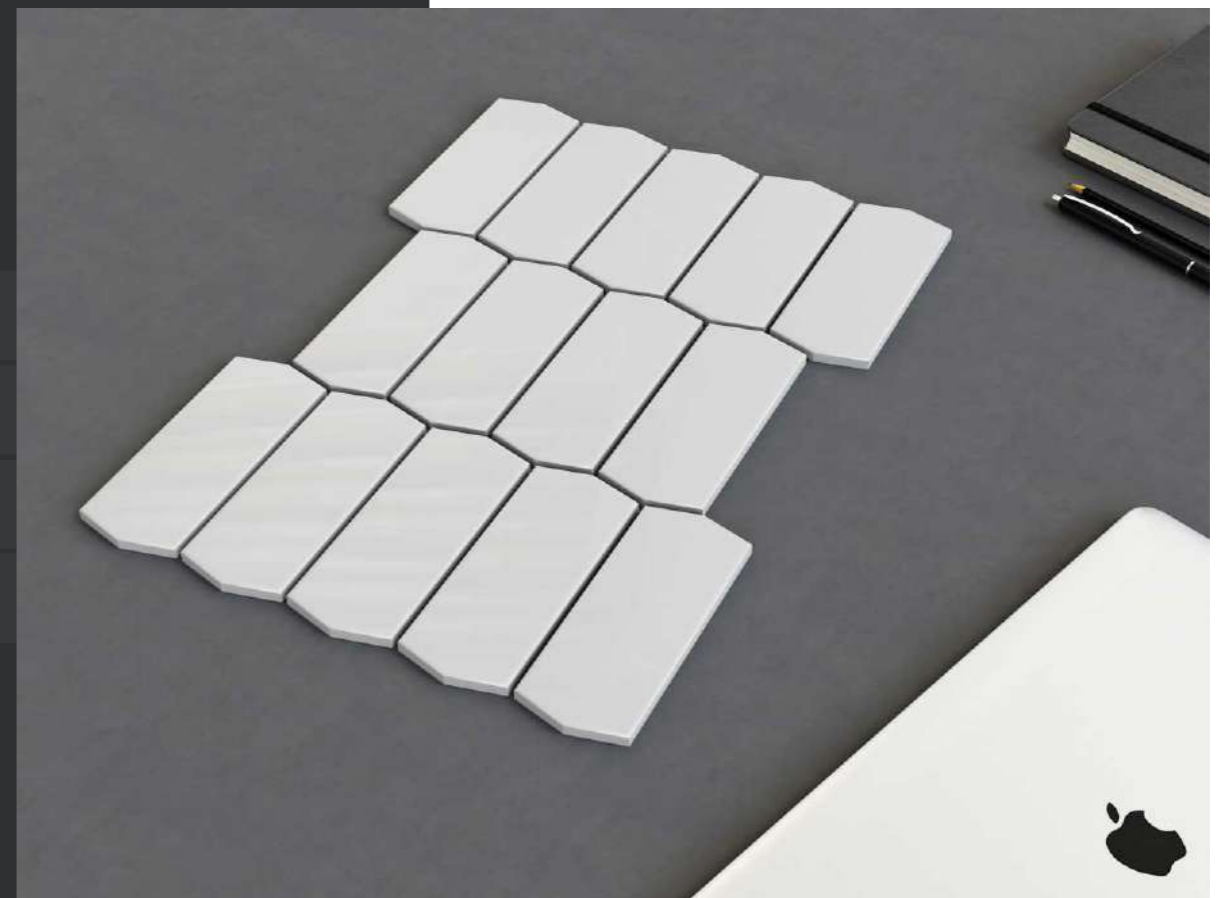


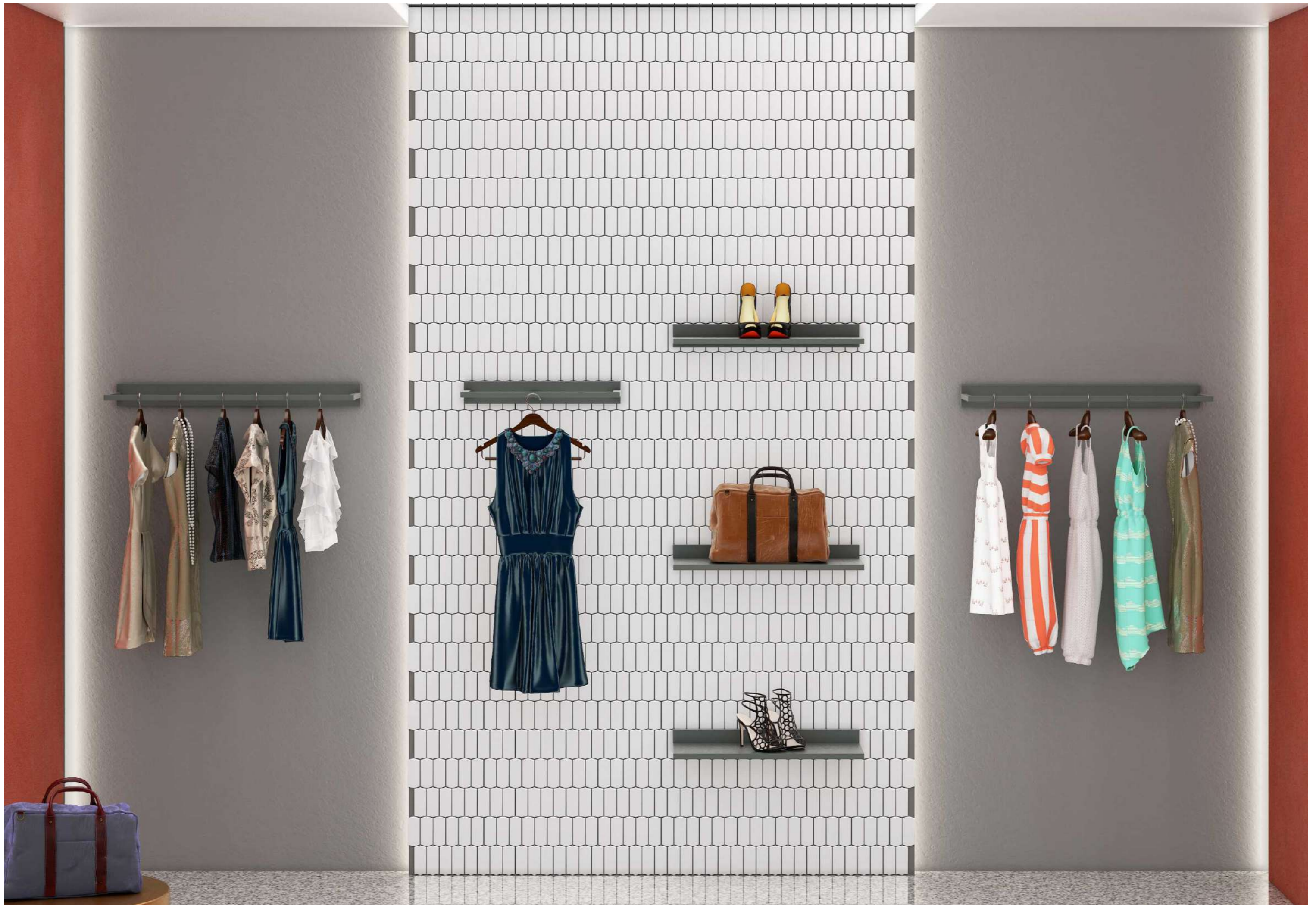




PICKETS

Chip Size : 52 X 124 MM
Sheet Size : 295 X 351.8 MM





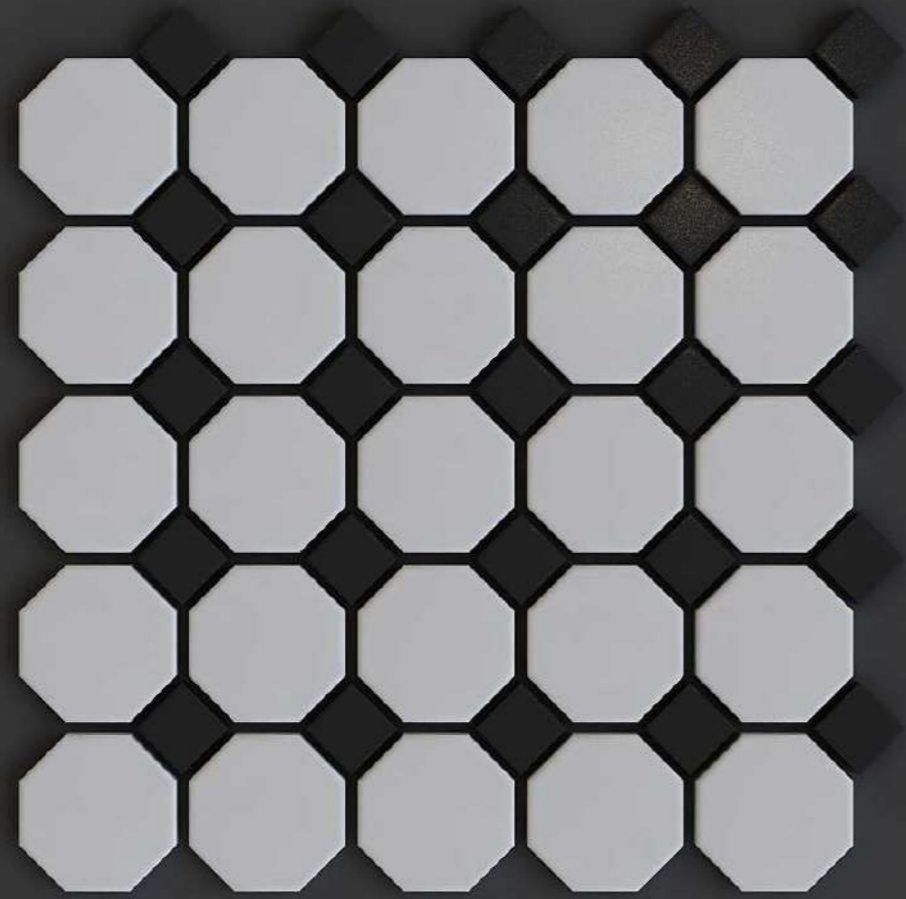
HEXAGON

Chip Size : 51.2 X 59.12 MM

Sheet Size : 349.3 X 293.3 MM







OCTAGON

Chip Size : 56 X 56 / 23 X 23 MM

Sheet Size : 309.7 X 309.7 MM





HERRING BONE

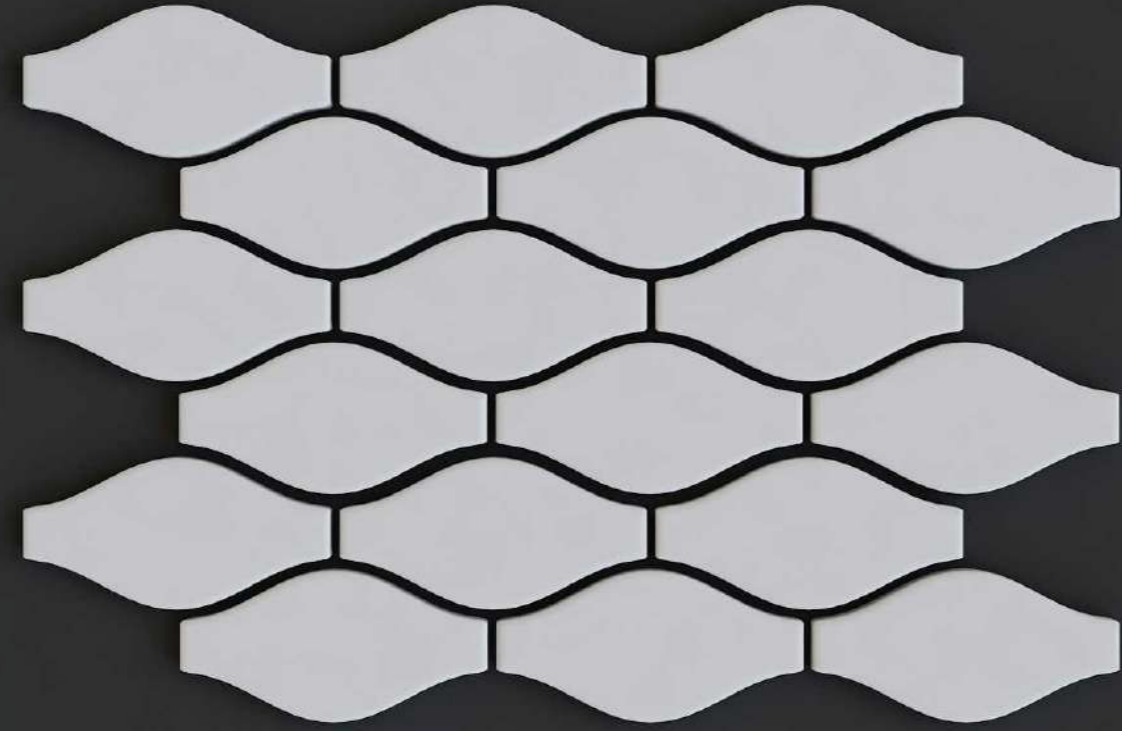
Chip Size : 23 X 72 MM

Sheet Size : 328.27 X 330.75 MM





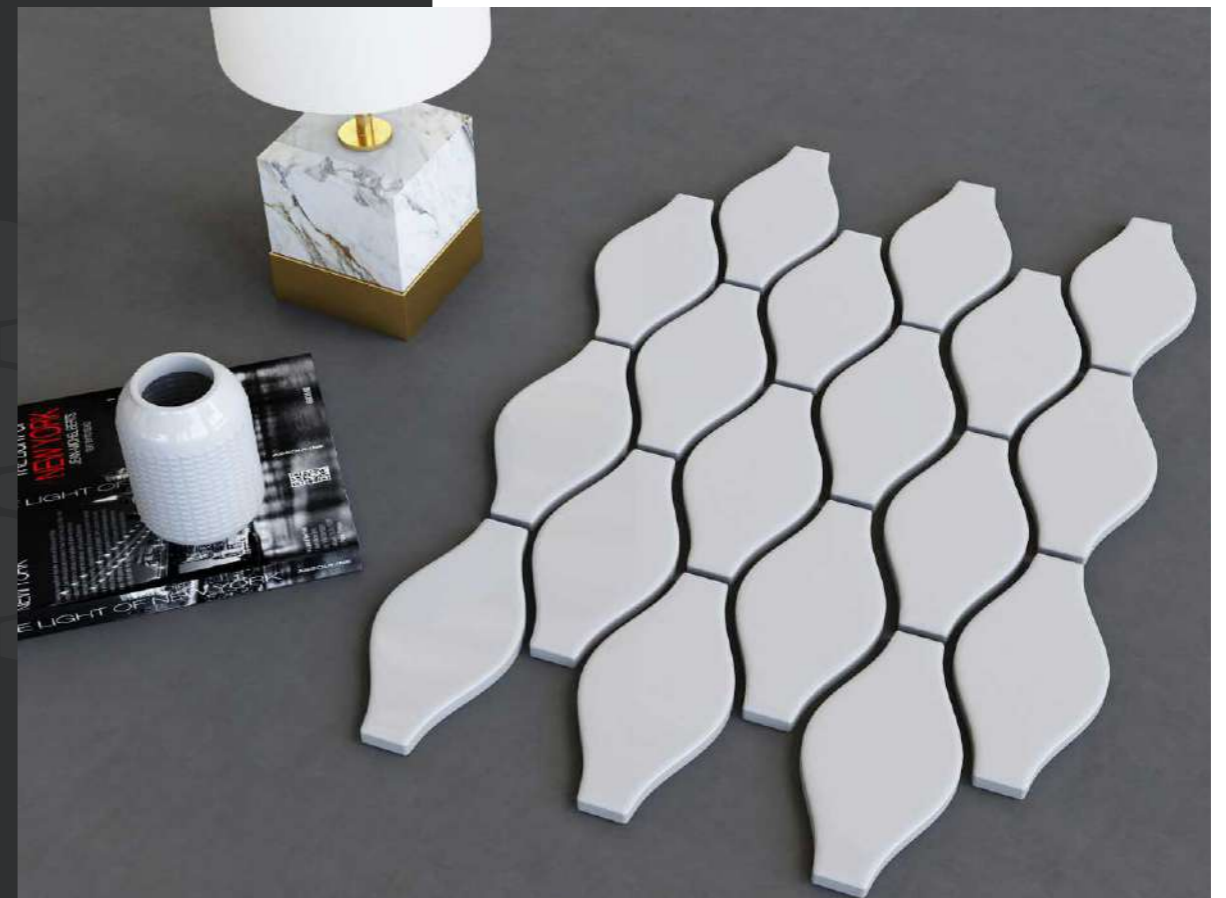
BAKING SODA:
Calories from Fat 60 (28%)
Total Fat 6.6 g (10%)
Saturated Fat 3.5 g (17%)
Cholesterol 38.2 mg (12%)
Sodium 263.4 mg (10%)
Total Carbohydrate 33.9 g (13%)
Dietary Fiber 1.3 g (5%)
Sugars 11.3 g (45%)
Protein 4.5 g



ARABESQUE LANTERN

Chip Size : 61 X 121 MM

Sheet Size : 280.95 X 431 MM

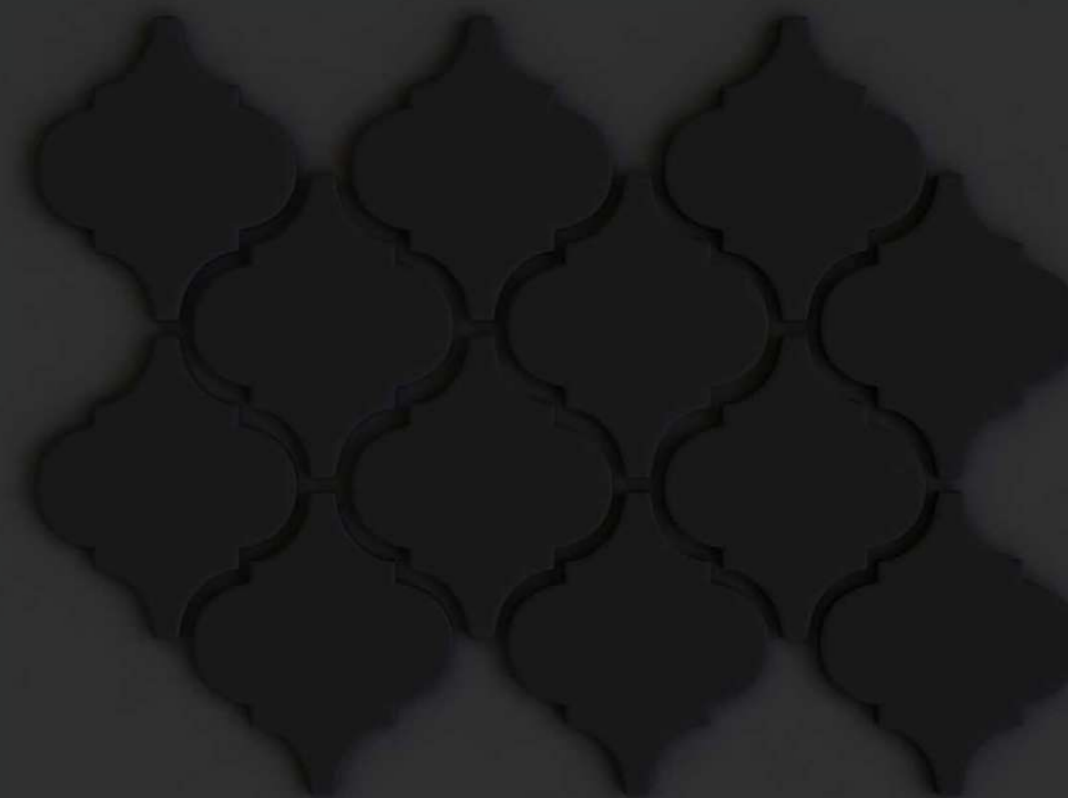




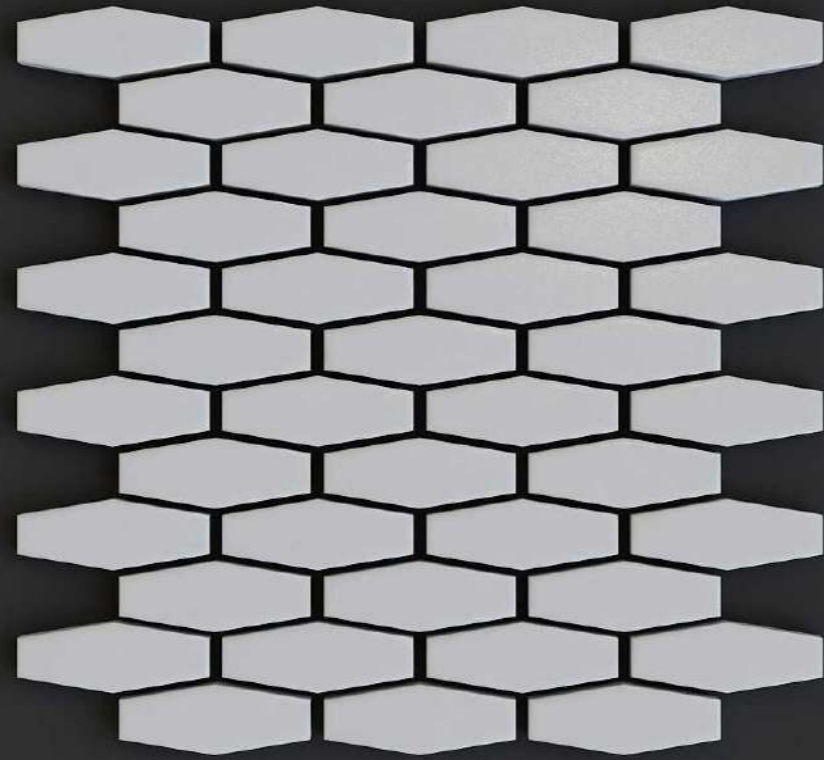
ARABESQUE LANTERN

Chip Size : 93.3 X 111 MM

Sheet Size : 395.80 X 310.2 MM







NOVAHEX

Chip Size : 29 X 75 MM
Sheet Size : 317.2 X 346.25 MM

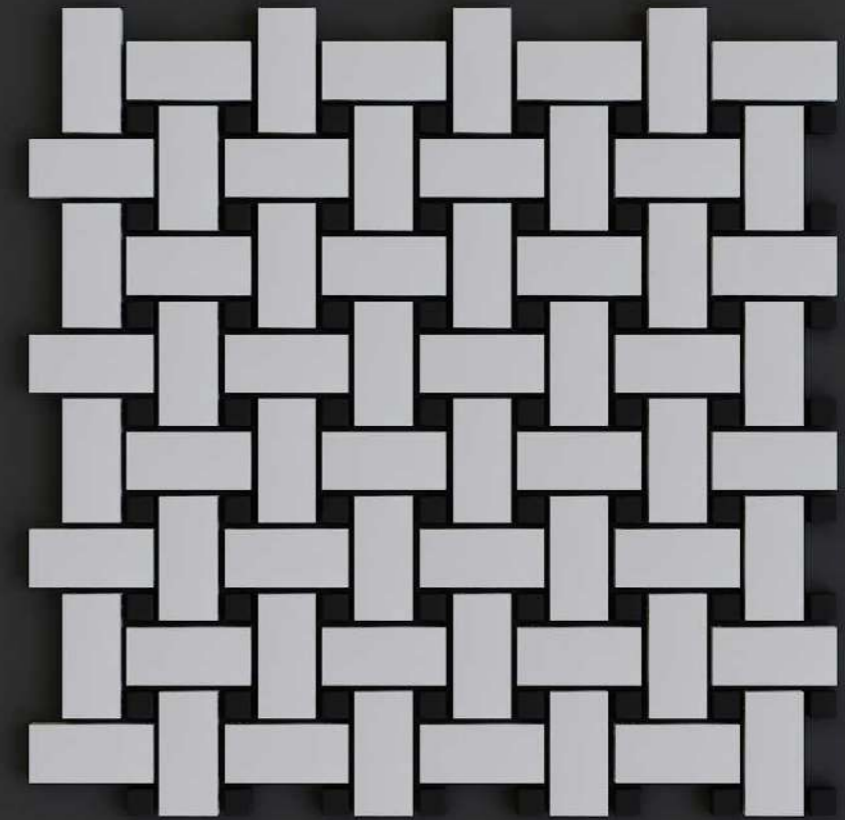




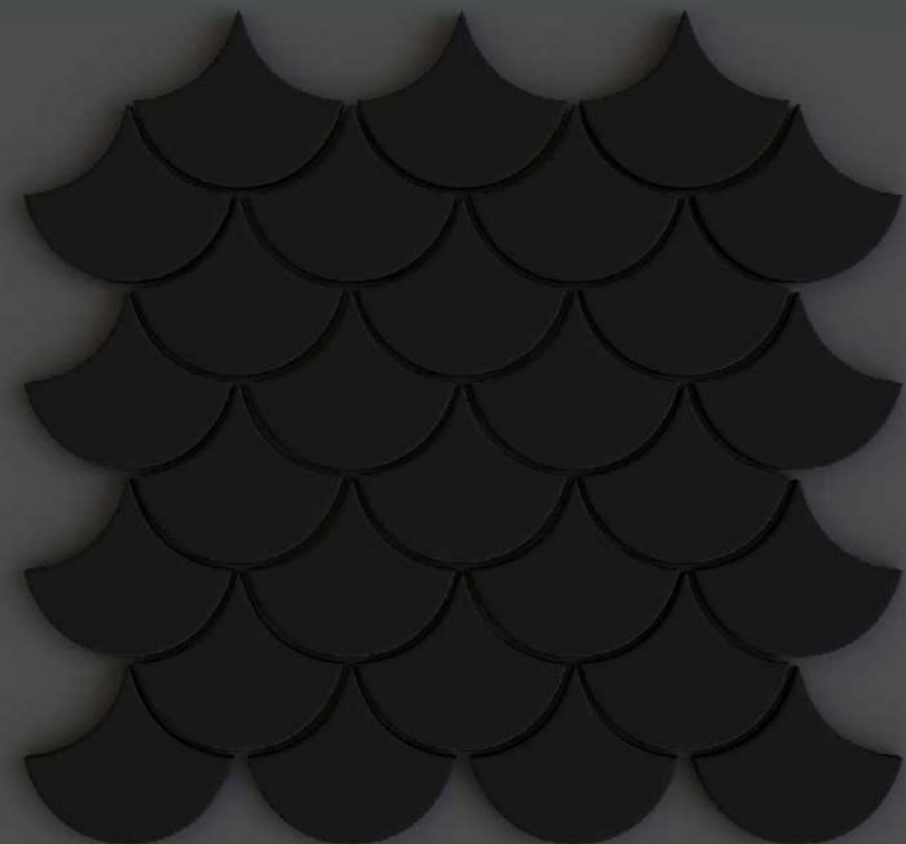
RETRO WEAVE

Chip Size : 23 X 48 / 10.5 X 10.5 MM

Sheet Size : 310.5 X 310.5 MM







FISH SCALE

Chip Size : 69.91 X 79.5 MM
Sheet Size : 325.29 X 342.9 MM



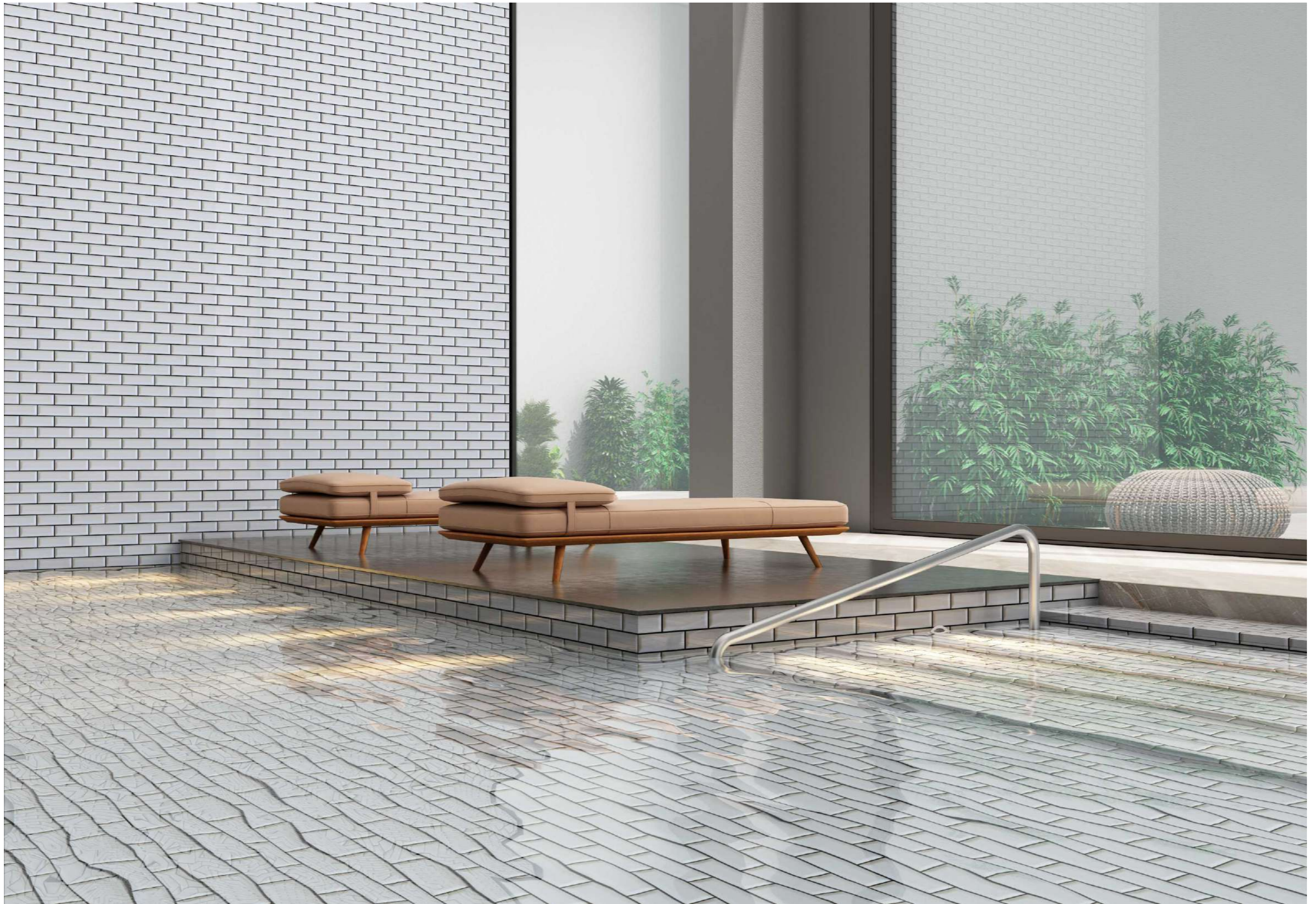


RECTANGLE OFFSET

Chip Size : 48 X 148 MM

Sheet Size : 298 X 373 MM







PENNY ROUND

Chip Size : 19.5 X 19.5 MM
Sheet Size : 291.8 X 313 MM



